

**WEST SOUND CORINTHIAN YACHT CLUB
28th ANNUAL RICH PASSAGE RAMBLE**

**WSSA TROPHY SERIES RACE #3
SATURDAY, APRIL 11, 2009**

WSSA STANDARD INSTRUCTIONS: All WSSA standard instructions, found in the front of this book shall apply, except as may be amended herein.

REGISTRATION: Pre-registration by mail is encouraged (including WSCYC yachts) by April 9th or delivered to the race committee not less than 30 minutes prior to the first warning signal.

COURSE: Start off the Port Orchard Marina breakwater and sail through Rich Passage. Leave Blake Island and Bainbridge Island Reef buoy #4 **to Port**. Finish off the Port Orchard Marina breakwater. Course may only be shortened at Bainbridge Island Reef buoy #4.

DISTANCE: 20 nautical miles (13.3 nautical miles for shortened course).

DESCRIPTION OF MARKS:

1. Start - Finish Line: Marked by an orange buoy off Port Orchard Marina breakwater and an orange flag on the breakwater.
2. Blake Island: Blake Island shall represent itself.
3. Bainbridge Island Reef Buoy #4: At Bainbridge Reef, south of Beans Point.

TIME LIMIT: The time limit of each division is TEN (10) hours. Yachts finishing after the time limit will be scored as DNF.

SCORING: Time-on-distance.

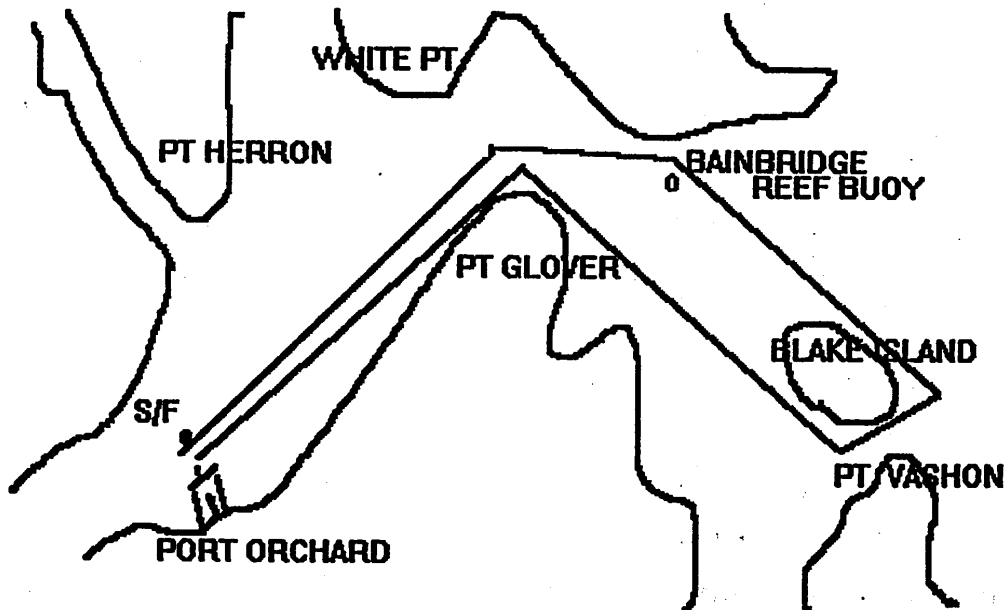
STARTING: First warning 10:00. Races shall be started by using the signals in Sailing Instruction 7.

TROPHIES: WSCYC trophies will be awarded in division as follows: 1st place (3 or more entries), 2nd place (4 or more entries), and 3rd place (5 or more entries).

28th ANNUAL RICH PASSAGE RAMBLE

WSSA TROPHY SERIES RACE #3

THIS CHART IS FOR REFERENCE ONLY!
DO NOT USE FOR NAVIGATION!



*Due to the increased Security measures in affect at Puget Sound Naval Shipyard,
**all racers are advised to stay 500 yards away from all
Naval ships and the shipyard pier heads.**
Coast Guard and Shipyard Police boats will enforce this zone!!*